

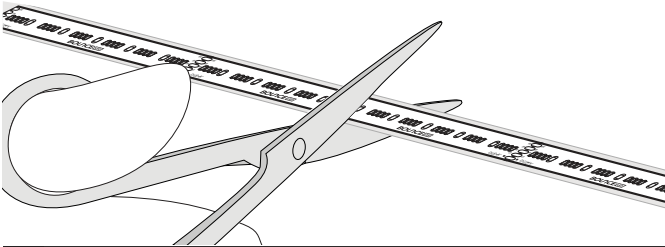
Installation Guide

Supaflex RGB+WW

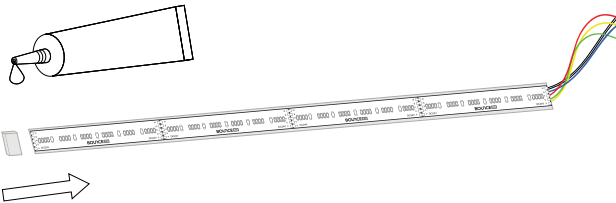


WARNING: Risk of electrical shock. Please read these instructions completely and carefully. Disconnect power before servicing or installing product.

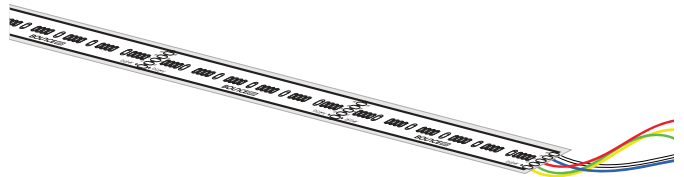
- 1 Cut LED strip to required size, taking care to only cut at intervals marked on the product. Note the maximum series length to avoid voltage drop.



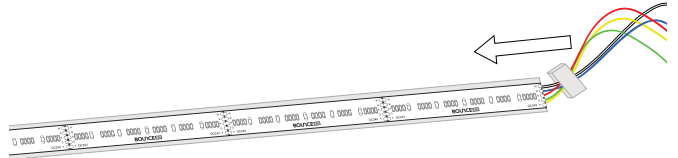
- 3 Apply glue to the inside of the end cap, then push it onto the LED strip, ensuring to wipe off any excess glue.



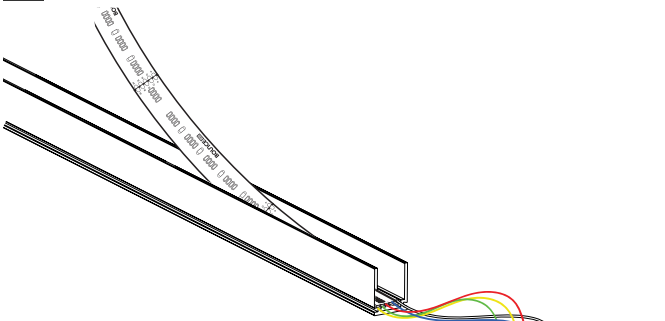
- 2 Solder connecting 'wire tails' to terminals for connection to power supply, or for 'bridging wires' for linking of strip segments. Always ensure positive-positive and negative-negative connection.



- 4 Use end cap with holes to seal wire tail. Wait for all glue to dry before powering on.



- 5 Ensure that your application area is clean and free of debris. Remove adhesive liner from the back of strip and press flex strip into place.



- 6 Connect to suitable power supply (and dimmer/controller if required) and test.

